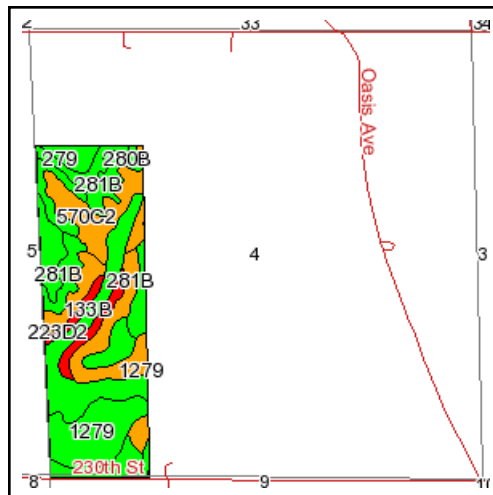
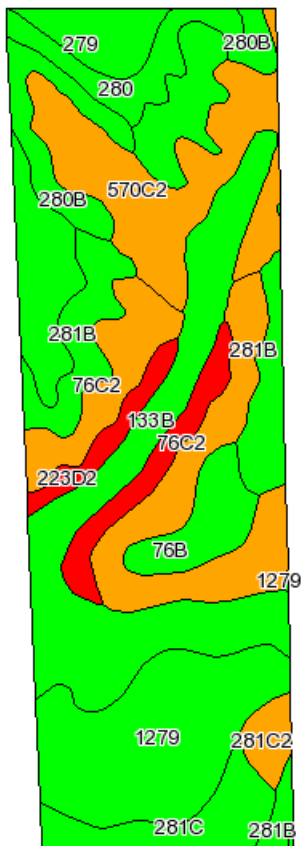


# Soils Map



State: **Iowa**  
 County: **Henry**  
 Location: **004-071N-005W**  
 Township: **New London**  
 Acres: **112**

Fsa borders provided by the Farm Service Agency as of May 23, 2008.  
 Soils data provided by USDA and NRCS.



Maps provided by:



©AgriData, Inc 2008  
 www.AgriDataInc.com

Code	Soil Description	CSR Legend	Acres	Percent of field	Non-Irr Class	CSR	Corn	Soybeans
133B	Colo silty clay loam, 2 to 5 percent slopes		19	16.9%	IIw	75	186	50
76C2	Ladoga silt loam, 5 to 9 percent slopes, moderately eroded		16.2	14.4%	IIIe	65	173	47
1279	Taintor silty clay loam, benches, 0 to 2 percent slopes		15.5	13.8%	IIw	88	204	55
570C2	Nira silty clay loam, 5 to 9 percent slopes, moderately eroded		13.3	11.9%	IIIe	67	175	47
281B	Otley silty clay loam, 2 to 5 percent slopes		13.1	11.7%	Ile	90	207	56
280	Mahaska silty clay loam, 0 to 2 percent slopes		9.4	8.4%	I	95	213	58
223D2	Rinda silty clay loam, 9 to 14 percent slopes, moderately eroded		6.1	5.4%	IVe	9	97	26
280B	Mahaska silty clay loam, 2 to 5 percent slopes		5.2	4.6%	Ile	90	207	56
281C	Otley silty clay loam, 5 to 9 percent slopes		5	4.5%	IIIe	75	186	50
76B	Ladoga silt loam, 2 to 5 percent slopes		4.1	3.7%	Ile	85	200	54
279	Taintor silty clay loam, 0 to 2 percent slopes		3.4	3.0%	IIw	88	204	55
281C2	Otley silty clay loam, 5 to 9 percent slopes, moderately eroded		1.7	1.5%	IIIe	70	180	49
<b>Weighted Average</b>						<b>75.5</b>	<b>186.8</b>	<b>50.4</b>