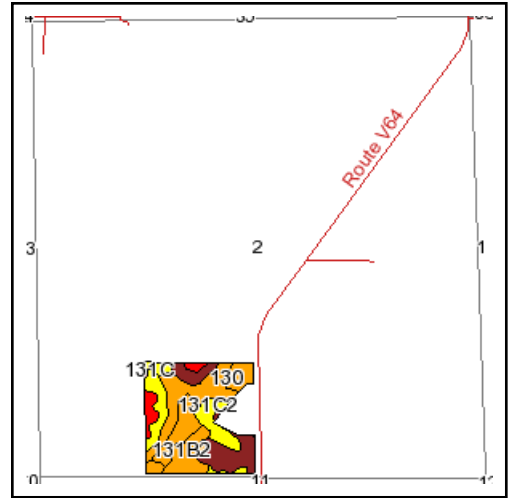
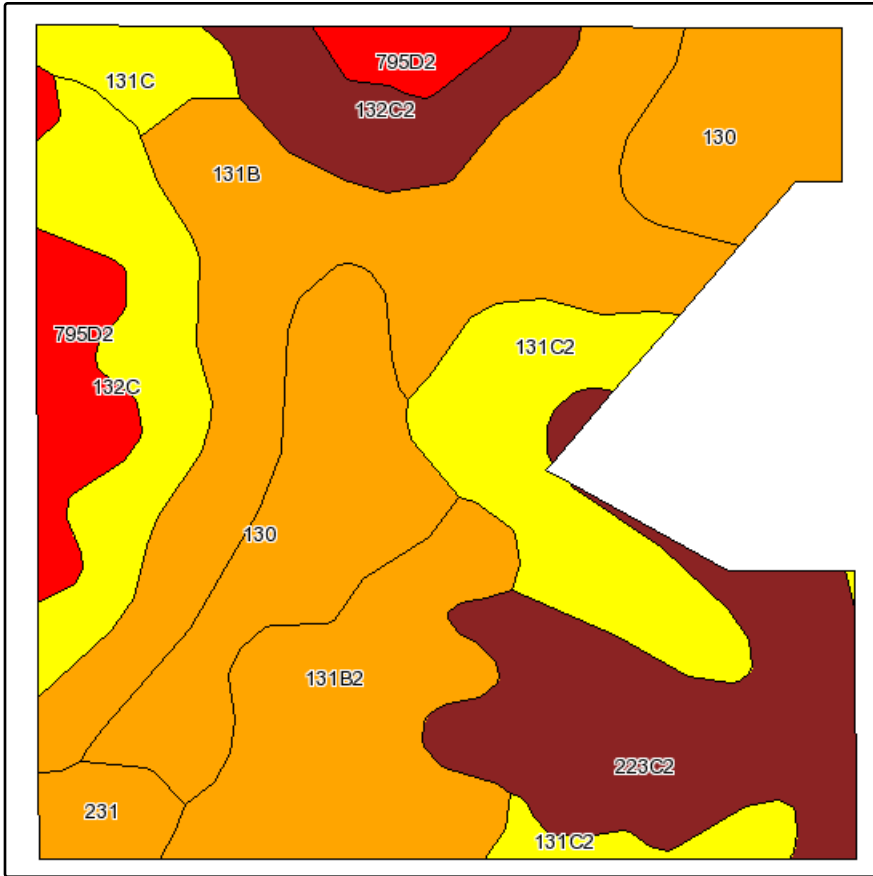
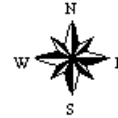


Soils Map



State: **Iowa**
 County: **Van Buren**
 Location: **002-069N-011W**
 Township: **Chequest**
 Acres: **35**

Fsa borders provided by the Farm Service Agency as of May 23, 2008.
 Soils data provided by USDA and NRCS.



Maps provided by:



Code	Soil Description	CSR Legend	Acres	Percent of field	Non-Irr Class	CSR	Corn	Soybeans
131B	Pershing silt loam, 2 to 5 percent slopes		7.8	21.8%	IIIe	67	167	45
130	Belinda silt loam, 0 to 2 percent slopes		5.8	16.7%	IIIw	63	162	44
223C2	Rinda silty clay loam, 5 to 9 percent slopes, moderately eroded		5.1	14.6%	IVw	22	107	29
131B2	Pershing silty clay loam, 2 to 5 percent slopes, moderately eroded		4.2	12.1%	IIIe	63	162	44
131C2	Pershing silty clay loam, 5 to 9 percent slopes, moderately eroded		3.8	11.0%	IIIe	45	138	37
132C	Weller silt loam, 5 to 9 percent slopes		2.9	8.4%	IIIe	44	136	37
795D2	Ashgrove silty clay loam, 9 to 14 percent slopes, moderately eroded		2	5.7%	IVe	8	88	24
132C2	Weller silty clay loam, 5 to 9 percent slopes, moderately eroded		1.9	5.3%	IIIe	40	131	35
131C	Pershing silt loam, 5 to 9 percent slopes		0.8	2.4%	IIIe	49	143	39
231	Edina silt loam, 0 to 2 percent slopes		0.7	2.0%	IIIw	63	162	44
Weighted Average						49.6	143.9	38.9