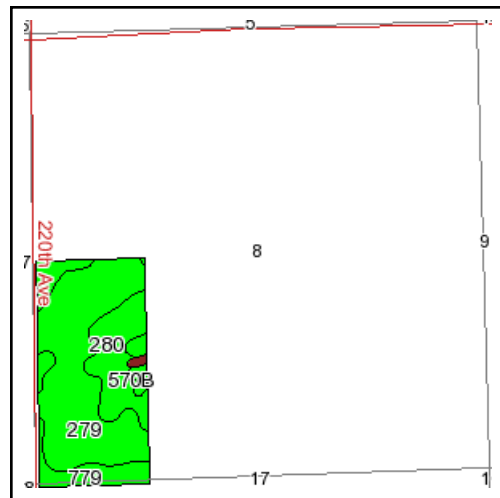
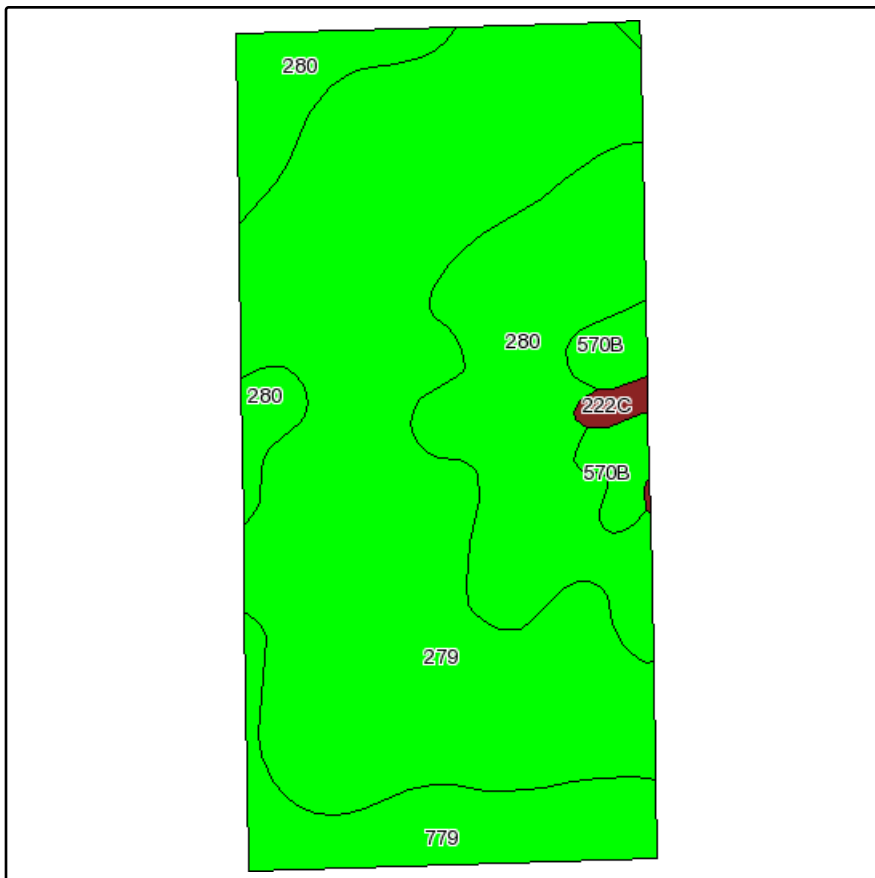
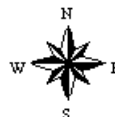


# Soils Map



State: **Iowa**  
 County: **Des Moines**  
 Location: **008-072N-004W**  
 Township: **Washington**  
 Acres: **79.6**

Fsa borders provided by the Farm Service Agency as of May 23, 2008.  
 Soils data provided by USDA and NRCS.



Maps provided by:



| Code                    | Soil Description                                | CSR Legend | Acres | Percent of field | Non-Irr Class | CSR         | Corn         | Soybeans    |
|-------------------------|---|------------|-------|------------------|---------------|-------------|--------------|-------------|
| 279                     | Taintor silty clay loam, 0 to 1 percent slopes  |            | 47.4  | 59.5%            | Ilw           | 88          | 205          | 55          |
| 280                     | Mahaska silty clay loam, 1 to 3 percent slopes  |            | 21.4  | 26.9%            | I             | 95          | 214          | 58          |
| 779                     | Kalona silty clay loam, 0 to 1 percent slopes   |            | 7.7   | 9.7%             | Ilw           | 85          | 201          | 54          |
| 570B                    | Nira silty clay loam, 2 to 5 percent slopes     |            | 2.5   | 3.2%             | Ile           | 87          | 203          | 55          |
| 222C                    | Clarinda silty clay loam, 5 to 9 percent slopes |            | 0.6   | 0.8%             | IVw           | 30          | 127          | 34          |
| <b>Weighted Average</b> |   |            |       |                  |               | <b>89.2</b> | <b>206.6</b> | <b>55.6</b> |